

FIRE SAFETY INSTRUCTION

DEPARTMENT OF CIVIL ENGINEERING
THOMAS MANNS VEJ 23, AALBORG



Why is it important?

- Seconds matter

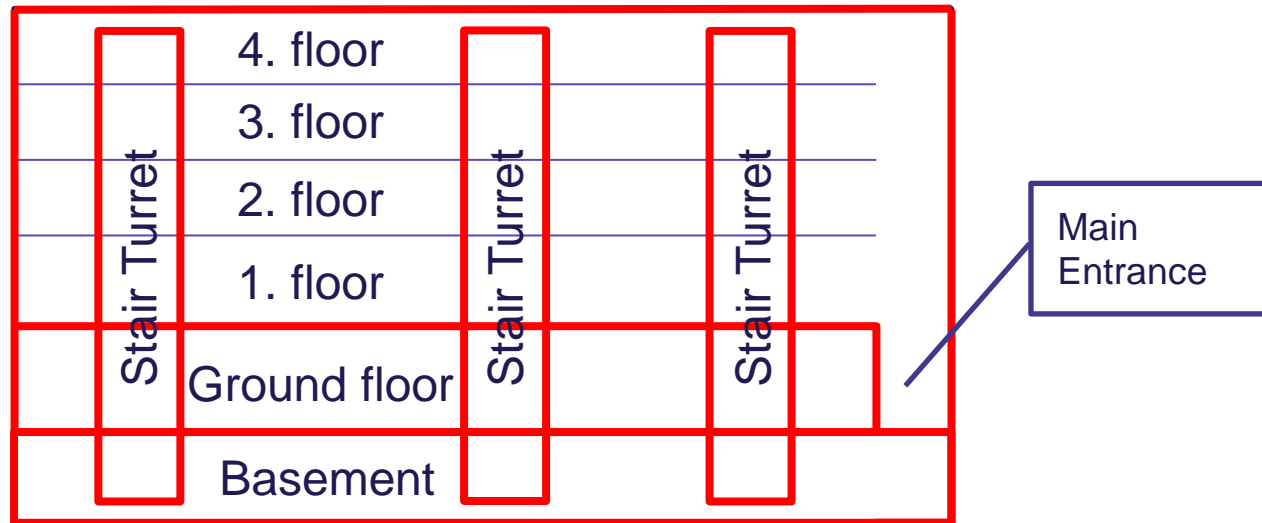


[Siberian shopping mall](#)



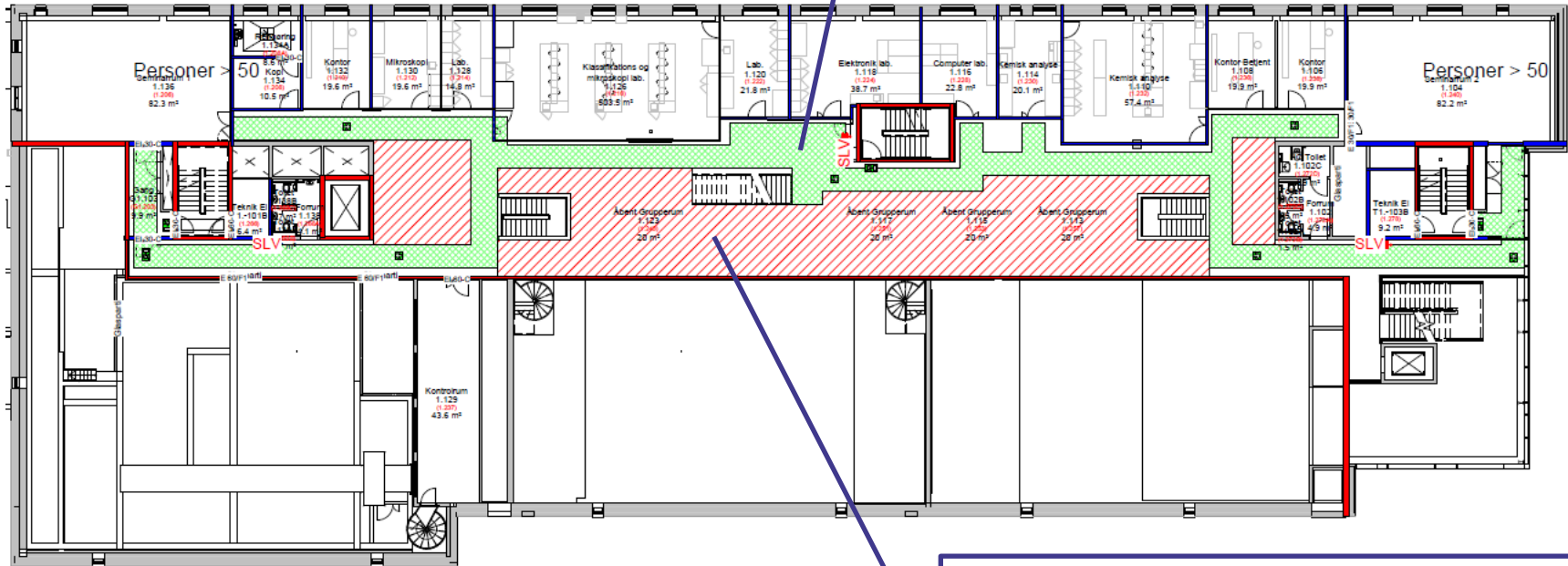
Fire Sections at Thomas Manns Vej 23

- 3 main Fire Sections



1. floor (Level 1)

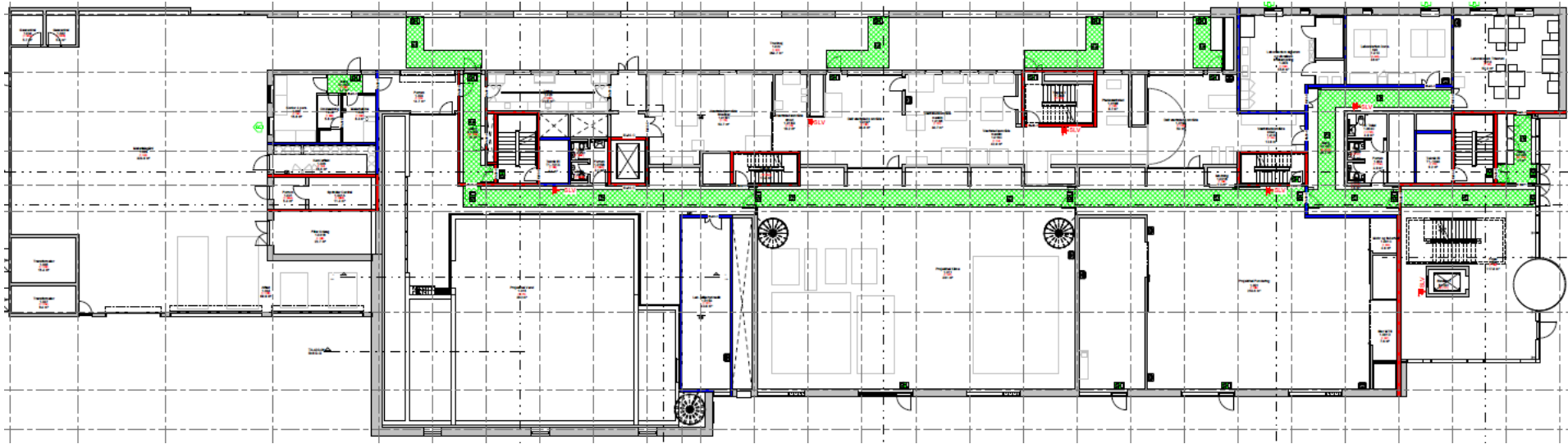
Make sure to keep the Escape routes clear at all times

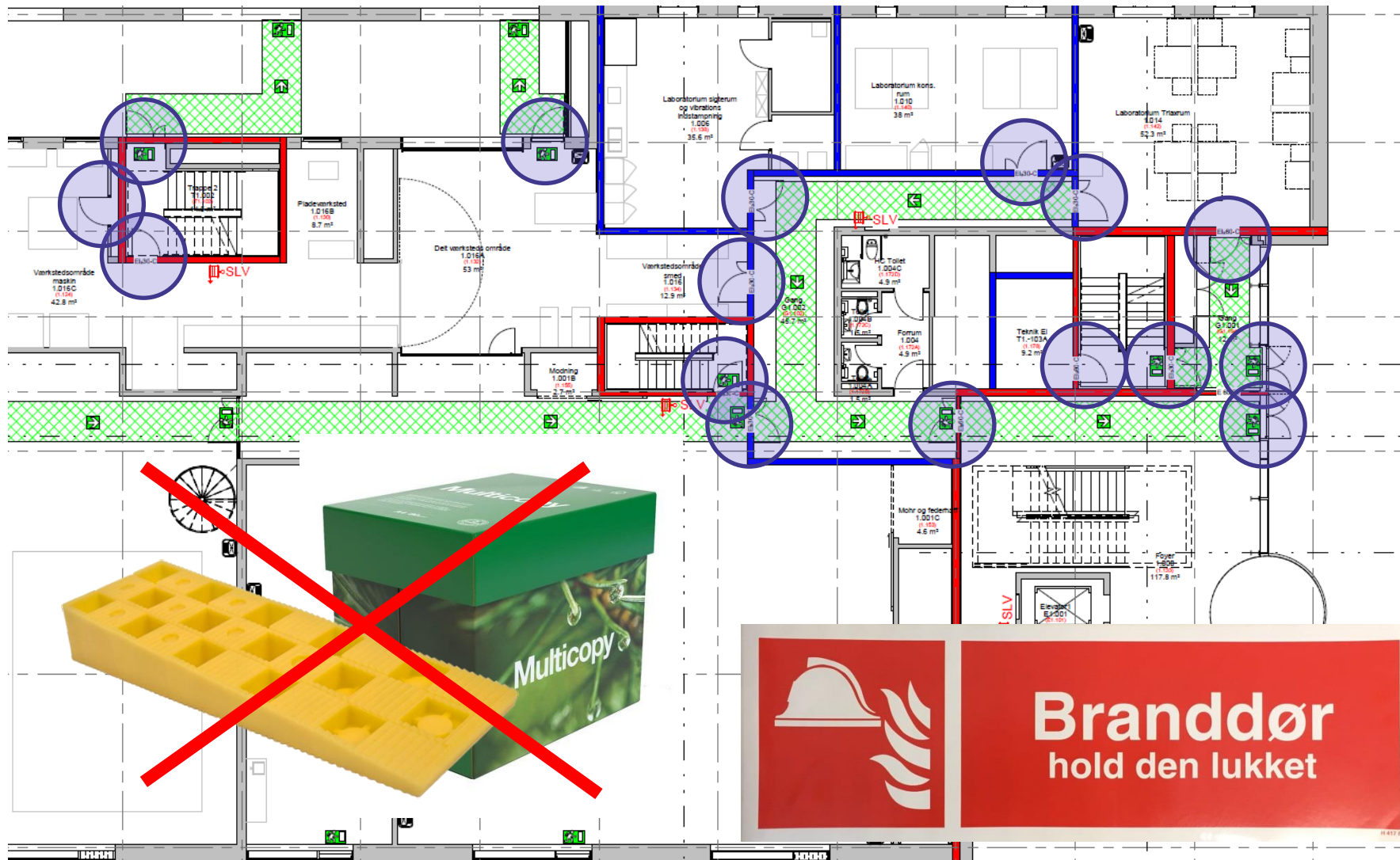


Use the red folding ruler and the instruction to make sure that the furniture arrangement is according to the regulation and always kept inside the red area.



Fire Plan - Ground floor (Level 0)





Branddør
hold den lukket

Safety Point

- Fire extinguisher (water)
- Fire Blanket
- Defibrillator
- First Aid Kit
- Eye wash Bottle

USE IT

...but only if you don't put yourself at risk



Evacuation


- If it is not safe to stay in the building, evacuation must be initiated.
- When TMV23 is to be evacuated, members of the internal preparedness will wear yellow and orange evacuation vests and support evacuation




Evacuation Leader

- The evacuation leader has the task of getting people to leave the area and for the area being checked for any remaining.
- It is important that you follow these instructions and evacuate the building as quickly as possible.

Evakueringsleder Evacuation Leader

	Evakuering skal iværksættes ved lyden af et varingsignal eller når det i øvrigt ikke er sikkert at opholde sig i bygning eller et område. Din opgave er at sikre, at evakueringen gennemføres fuldt ud.
1.	Tag den gule vest på. Begynd evakuering. Udsæt ikke dig selv for fare.
2.	Få alle personer i dit evakueringsområde til at forlade bygningen og gå til samlepladsen. Udpeg sikre flugveje, hvis nødvendigt.
3.	Sørg for, at dit område bliver afsøgt, og at alle kommer ud. Luk alle døre og vinduer, hvis det er muligt.
4.	Sørg for at personer i tilstødende områder informeres om evakueringen.
5.	Gå til samlepladsen, og giv samlepladslederen (orange vest) en status for evakueringen. Rapportér om forhold i dit evakueringsområde.
6.	Bliv på samlepladsen.

	Evacuation must be undertaken at the sound of a warning signal or whenever it is not safe to stay in a building or an area. Your task is to ensure, that the evacuation is completed.
1.	Put on the yellow vest. Begin evacuation. Do not endanger yourself. everybody in your evacuation area leaves the building and goes to the joint. Point out safe escape routes, if necessary. that your area is fully searched, and that everybody gets out. Close all windows, if possible. people in adjacent areas are informed about the evacuation. Semblly point and give the assembly point leader (orange vest) a evacuation. Report about conditions in your evacuation area. assembly point



Evacuation Leader



Evacuation must be undertaken at the sound of a warning signal or whenever it is not safe to stay in a building or an area.

Your task is to ensure, that the evacuation is completed.

1. Put on the yellow vest. Begin evacuation. Do not endanger yourself.
2. Ensure that everybody in your evacuation area leaves the building and goes to the assembly point. Point out safe escape routes, if necessary.
3. Make sure that your area is fully searched, and that everybody gets out. Close all doors and windows, if possible.
4. Ensure that people in adjacent areas are informed about the evacuation.
5. Go to the assembly point and give the assembly point leader (orange vest) a status for the evacuation. Report about conditions in your evacuation area.
6. Stay at the assembly point.



Assembly Point Leader

- The Assembly Point Leader carries an orange vest and will receive the evacuees at the assembly Point outside.
- The Assembly Leader will arrange for the dialogue with the authorities and will give a status as to when / if you can go back into the building.

Samlepladsleder Assembly Point Leader

- 🇩🇰 Ved evakuering skal alle evakuerede gå mod samlepladsen. Din opgave er at tage imod de evakuerede på samlepladsen og at indsamle og videregive relevant information.
1. Tag den orange vest på. Gå til samlepladsen.
 2. Tag imod de evakuerede. Sørg for at personer fra samme evakueringsområde bliver sammen på samlepladsen.
 3. Få relevant information fra de evakuerede om savnede personer og om forhold i evakueringsområdet.
 4. Modtag status fra evakueringsleder (gul vest).
 5. Orienter indsatsleder fra politi eller redningsberedskab om savnede personer og om forhold i bygningen.
 6. Sørg for relevant information til de evakuerede. Bliv på samlepladsen.

- 🇩🇰 In case of evacuation all evacuees must go to the assembly point. Your task is to receive the evacuees at the assembly point and to gather and pass on relevant information.
- Orange vest. Go to the assembly point.
- Evacuees. Make sure that people from the same evacuation area stays at the assembly point.
- Information from the evacuees about missing persons and about the evacuation area.
- Information from the evacuation leader (yellow vest).
- Information from the commander from the police or the emergency service about any issues and about conditions in the building.
- Pass on information to the evacuees. Stay at the assembly point.



Assembly Point Leader



In case of evacuation all evacuees must go to the assembly point. Your task is to receive the evacuees at the assembly point and to gather and pass on relevant information.

1. Put on the orange vest. Go to the assembly point.
2. Receive the evacuees. Make sure that people from the same evacuation area stays together at the assembly point.
3. Get relevant information from the evacuees about missing persons and about conditions in the evacuation area.
4. Receive status from the evacuation leader (yellow vest).
5. Brief the on-site commander from the police or the emergency service about any missing persons and about conditions in the building.
6. Relay relevant information to the evacuees. Stay at the assembly point.



What to do...

- Alarm
- Use the nearest escape route, even if it is not the shortest route to the assembly Point.
- Go to the Assembly Point
- Await instructions

